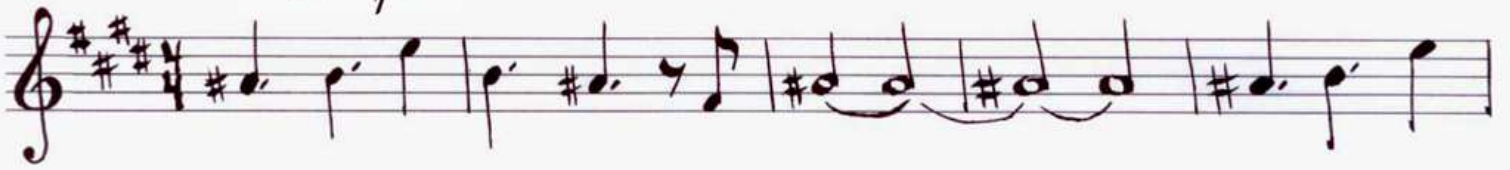


Pampa y Litoral

Fernando Graciola

E7M(#11)/G#



C#m7M(9)

A/G



F#7sus

F#7sus

F7M(#5)



E7M(#11)/G#



C#m7M(9)

A/G



F#7sus

F°(b13)

G#°(b13)



A7(#11)

G#m7(9)



Am⁷

D⁷(13)

G⁷M

Gm⁷



C⁷(13)

Bb^o(b13)

